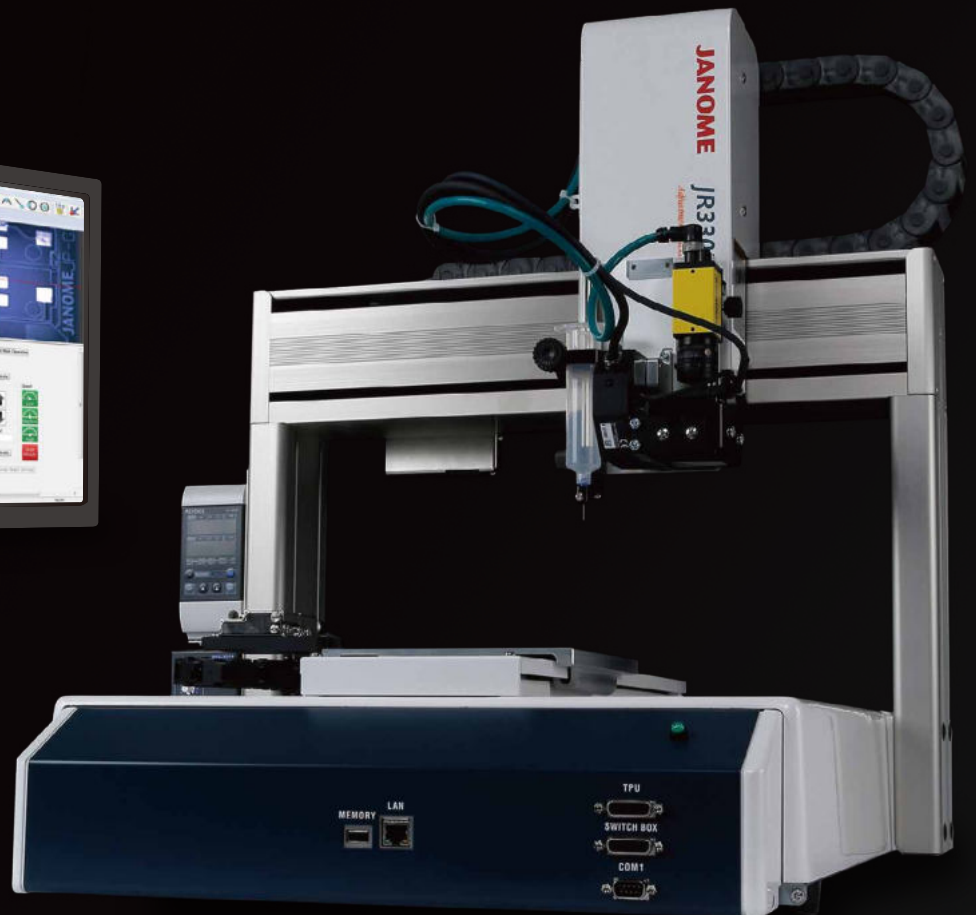
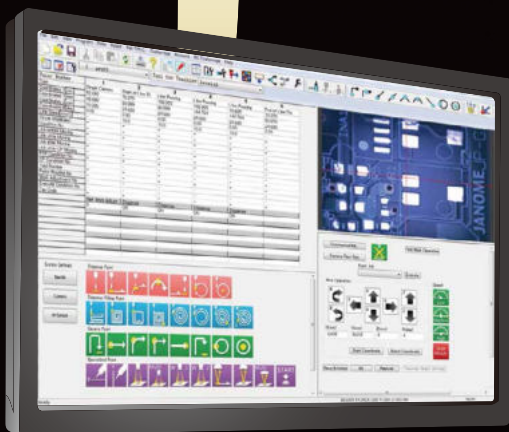


**Desktop Robot**  
**JR3000 SERIES**

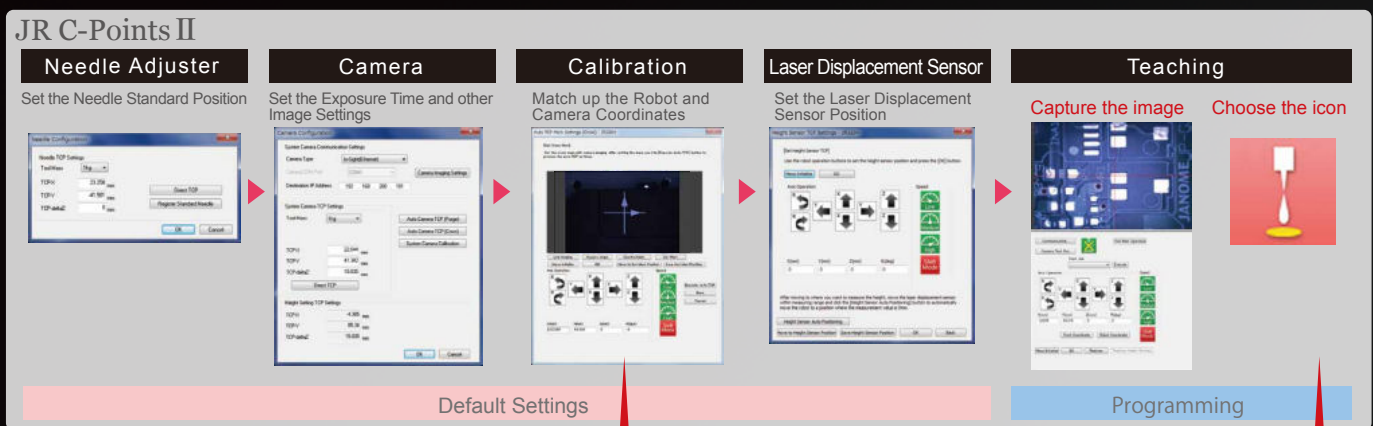
*Adjustment Package for Dispensing*



# The same software for all your settings!

We combined the camera, laser displacement sensor, and needle adjuster for precision dispensing on fine workpieces with the highly rigid, high precision JR3000 Series to create a comprehensive machine vision system package. What's more, our dedicated software, "JR C-Points II" is even more user-friendly. Now anyone can do perform precision robot teaching using the camera images.

## Easy settings from start to finish with our specialized software



### Auto Calibration

Capture the purged dispensing agent and the camera calibrates automatically. (Line up the needle position with the cross to capture with the camera.)



### Easy Teaching

Teaching is done in JOG mode. Use the camera images to move to the location and then choose the icon for the operation you want.



Ex.) Point Dispensing

## Adjustment functions for high precision dispensing

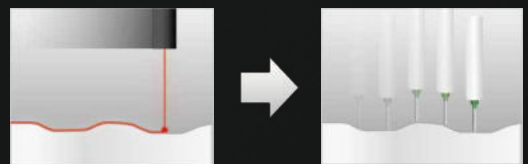
### 1 Camera Adjustment

The robot dispenses while making adjustments on displaced workpieces.



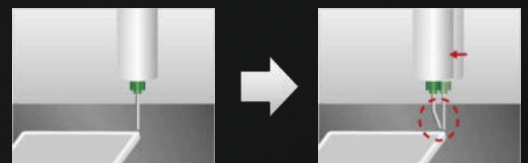
### 2 Continuous Height Adjustment

The laser displacement sensor continuously measures the workpiece height.



### 3 Needle Adjustment

If the needle tip position is displaced after nozzle replacement, the robot automatically detects the current needle position and makes adjustments.



# - Janome Dynamic Adjustment Package Dispensing Robot -

## Dedicated interface for dispensing with a camera "JR C-Points II"

The "Programming Area", "Camera Imaging Area", "Basic Operations Area" and "Robot Operations Area" are all integrated on one screen for a clear, convenient interface.

### Programming Area

Displays programming data point by point. Choose and edit the point values directly.

### Basic Operation Icons

Program just by choosing the icons you want!



Point Dispense



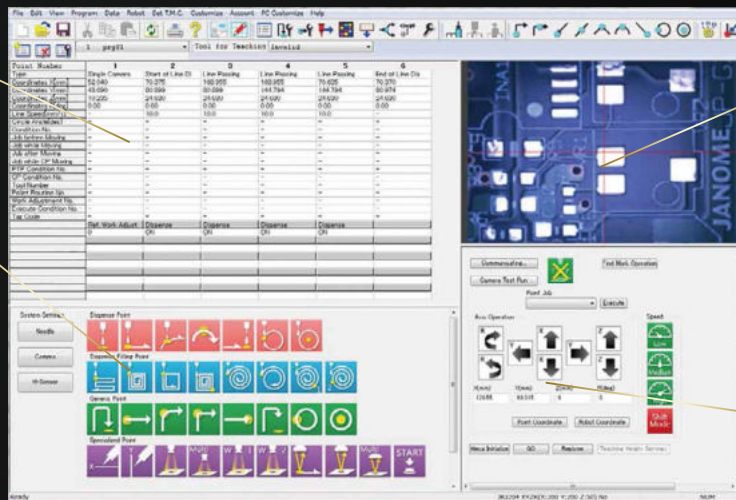
Start of Line Dispense



Single Camera Shoot Point



Z Sensor Line Dispense Start



### Camera Imaging Area

Use magnified camera images to designate precise positions. With "JR C-Points II" making camera settings is easy.

Click on the camera image, and the robot recenters on the position you clicked and moves accordingly.

### Robot Operations Area

Make JOG movements while watching the camera image.

## All this high quality in one package

### Robot

**JR3000 SERIES**

A highly rigid desktop robot designed for precision dispensing. Do jobs faster and with greater precision, with dependably high repeatability over the long term.

### Camera

**In-Sight Micro COGNEX**

All the functions you need for an industrial machine vision system packed into an ultra-compact casing for top class performance.  
Resolution (Pixels): 640 x 480

### Laser Displacement Sensor

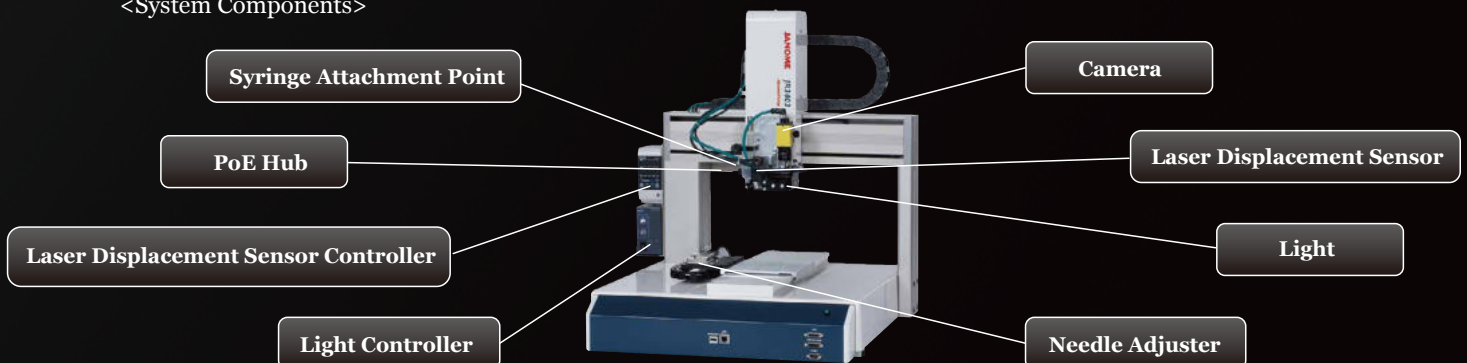
**LK-G3000A KEYENCE**

"Stable Measurement" achieved through high-speed sampling.  
Measuring Range: 30±5mm  
Spot Diameter: Φ30µm  
Repeatability: 0.5µm

### Needle Adjuster

3 Axes Type	4 Axes Type
 Repeatability: ±0.05mm Needle Displacement Margin: ±5mm Compatible Needles (PR-1): Φ0.35~2.50mm (PR-2): Φ0.20~1.00mm	 Repeatability: ±0.15mm Needle Displacement Margin: ±5mm Compatible Needles: Φ0.20~2.50mm

### <System Components>





# Dispensing with Camera Specifications

Item		Model <sup>*1</sup>	JR3303	JR3403	JR3304	JR3404
Number of Axes			3 Axes (Synchronous Control)		4 Axes (Synchronous Control)	
Operating Range	X & Y Axes		300×320mm	400×400mm	300×320mm	400×400mm
	Z Axis		100mm	150mm	100mm	150mm
	R Axis		-		±360°	
Maximum Portable Load	X Axis (Workpiece)		14kg			
	Y Axis (Tool)		5kg			
Maximum Speed (PTP Drive) <sup>*2</sup>	X Axis		900mm/sec			
	Y Axis		800mm/sec			
	Z Axis		400mm/sec			
	R Axis		-		900°/sec	
Maximum Speed (CP Drive) <sup>*2</sup>	X, Y, Z Combined		850mm/sec			
Acceptable Moment of Inertia			-		90kg·cm <sup>2</sup>	
Repeatability (Robot) <sup>*3</sup>	X & Y Axes		±0.007mm		±0.01mm	
	Z Axis		±0.007mm		±0.01mm	
	R Axis		-		±0.008°	
External Dimensions (Excluding Protrusions)			W628×D608×H657mm	W651×D668×H715mm	W628×D608×H769mm	W651×D668×H844mm
Open Height			200mm	208mm	275mm	300mm
Robot Weight			42kg	51kg	44kg	55kg
Drive Method			5 Phase Pulse Motor			
Control Method			PTP(Point to Point) Control, CP(Continuous Path) Control			
Interpolation			3-dimensional linear and arc interpolation			
Teaching Method			Simple and versatile teaching using our original software			
Teaching Pattern			Online teaching from your PC using our dedicated software			
Screen Display Options	Measurement Unit		mm, inch			
	Languages		English, Japanese, Simplified Chinese, Traditional Chinese			
Program Capacity			999 Programs			
Database Capacity <sup>*4</sup>			Up to 32,000 points			
Simple PLC Functions			Up to 100 programs, with up to 1,000 steps/program			
External Input/Output	I/O-SYS <sup>*5</sup>		16 Inputs/ 16 Outputs			
	I/O-1 <sup>*5</sup>		8 Inputs/ 8 Outputs (including 4 relay outputs)			
	I/O-MT		Controls up to 2 external motors (Optional)			
	I/O-S		Interlock connector for an area sensor, etc. (Optional)			
	Fieldbus		CC-Link / DeviceNet / PROFIBUS / PROFINET / CANopen / EtherNet/IP (Optional)			
	COM <sup>*5</sup>		RS232C 3ch (for external devices, COM commands)			
	MEMORY		USB memory connector (save and readout teaching and customizing data, back up system software)			
	LAN		For PoE Industrial Hub connection			
Camera Dispensing Specifications Attachments <sup>*6</sup>	Camera		In-Sight Micro Series SM1100-11 (manufactured by COGNEX)			
	CCTV Lens		SV-1614V (manufactured by VS Technology)			
	Closeup Ring		SV-EXR (7 piece Closeup Ring Set: 0.5mm,1mm,2mm,5mm,10mm,20mm,40mm) (manufactured by VS Technology)			
	Lighting		Light (Coaxial Type): LfV3-35SW (White) (LfV3-35RD (Red) also available), Controller: PD2-3024 (manufactured by CCS)			
	Laser Displacement Sensor		Sensor: LK-G30A (small spot type), Controller: LK-G3000VA (All-in-one) (manufactured by KEYENCE)			
	Needle Adjuster		3 Axes: NADS(PR-1) also NADE(PR-2), 4 Axes: OGLW2-40T-2PS6			
PoE Industrial Hub		CPS-24V-POE4 (Manufactured by COGNEX)				
Power Source			AC100~120V/ AC200~240V ±10% (single phase)			
Power Consumption			280W			
Operating Environment	Temperature		0~40°C			
	Relative Humidity		35~85% (non condensing)			
	Elevation		up to 1,000m			

## <Notes>

- \*1 For Dispensing with Camera Specifications, all robots are double column types.
- \*2 Maximum speed can vary depending upon conditions.
- \*3 Repeatability was measured at a constant temperature and does not represent a guarantee of absolute precision.
- \*4 Point data memory capacity reduces as additional function data settings/point job data/sequencer data are added, due to the shared data storage area.
- \*5 Values are for robot with peripheral devices attached.
- \*6 We ask that customers please prepare the PC (and connecting cable) and dispenser at their end.

## <Standard Accessories>

- Power Cord · Switchbox (also available with optional switch or mode changing switch)
- Operation Manual (CD-ROM) · PC Software JR C-Points II (Windows® 7, Windows® 8.1, Windows® 10 compatible)

## <Options>

- Teaching Pendant (for use with the robot) · I/O-1 Cable · I/O-MT Cable

- Specifications may change without notice to improve product quality.
- If you have any questions, please contact us at the telephone number listed below, or visit our website.

## [ Switchbox ]



## Janome Sewing Machine Co., Ltd. Industrial Equipment Sales Division

1463 Hazama-machi, Hachioji-shi, Tokyo 193-0941  
 Tel: +81-42-661-6301 FAX: +81-42-661-6302  
 E-mail : j-industry@gm.janome.co.jp  
 URL: http://www.janome.co.jp/industrial.html